

PERSONAL NAVIGATOR

TUESDAY, APRIL 1, 2014

Sunrise 7:01 a.m. Sunset: 7:26 p.m.
 Evening Attire: Optional Dress Up
 All Ashore: 9:30 a.m.
 All Aboard: 5:45 p.m.
 Today: Partly Sunny High: 72°F/22°C
 Tomorrow: Partly Sunny High: 72°F/22°C

NASSAU, BAHAMAS

TWICE CHARMED

AN ORIGINAL TWIST ON THE CINDERELLA STORY

STEP BACK IN TIME TO EXPERIENCE THE STORY OF CINDERELLA IN A MAGICAL NEW WAY. ENJOY THIS MAGNIFICENT MUSICAL PRODUCTION WITH YOUR FAVORITE CHARACTERS - AND A FEW NEW ONES!


WALT DISNEY THEATRE

Deck 4, Forward

6:15 p.m. & 8:30 p.m.

As a courtesy to all Guests, we kindly advise that the saving of seats is **not** permitted in the Walt Disney Theatre.



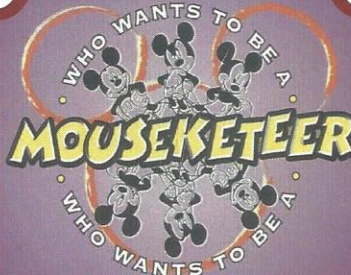
 Assistance available at the entrance to the Walt Disney Theatre 30 minutes prior to show time.



Nassau Port Information

While you will find many great experiences in Nassau, there have been reports of increased crime, including assaults and robberies involving tourists in the area. As in any large city, you'll want to take some basic precautions to make the most of your time ashore.

- Be aware of your surroundings at all times, just as you would in your normal daily activities.
- Avoid shortcuts, narrow alleys or poorly lit streets. We recommend that Guests only visit the downtown shopping areas and other tourist locations.
- Leave valuables in your room safe and avoid carrying large amounts of cash. Exercise caution when using ATMs. Cameras and handbags should be carried out of sight and secured to you with a strap.
- Leave passports, air transportation tickets and other travel documents in your room safe. When going ashore, each adult is required to carry a Driver's license, copy of passport or other government-issued photo ID.
- If travelling by taxi, use only licensed taxi operators.
- In general, use the same level of precaution you would use in any tourist destination.
- Most crimes are easier to commit in dark, unlit areas. You should stay out of these types of areas and consider returning to the ship before nightfall. If you stay out at night, please be extra vigilant about your personal safety.



GAME SHOW

Your chance to get in to the "hot seat" and win limited edition prizes. Or, play along as part of our live studio audience.

D Lounge,
Deck 4, Midship,
7:30 p.m. & 9:45 p.m.

Don't Miss:

Wake up with Disney Junior

D Lounge, Deck 4, Midship - 8:30 a.m.

What happens when you experience unlimited fun with your favorite Disney Junior shows? You get an exciting dance party designed especially for preschoolers ages seven and under.

Disney Channel on Deck

Deck Stage, Deck 9, Midship - 3:00 p.m.

Don't change that channel! It's time for a Disney Channel afternoon poolside! Your cruise staff will host an exciting day of games and contests in between your favorite Disney Channel shows! So sit back, relax, and enjoy the sun!

Chip-It Golf (12+)

Lobby Atrium, Deck 3, Midship - 3:30 p.m.

It's par for the course for our Guests 12 and older to compete on our special "greens" in this fun tournament.

Rockin' Rowdy (18+)

Fathoms, Deck 3, Forward - 10:30 p.m.

Join your Club Host as we round up the greatest classic rock and urban country hits. Featuring a bootstomping performance from the 'Boot Scootin' dancers to start the party!



Please check your tickets for meeting times and locations. Visit the Port Adventure's Desk, Deck 3, Midship for any questions.

DINNER MENU

Animator's Palate: Show Dinner
 Carioca's: South American Dinner
 Lumière's: French Dinner

DRINK OF THE DAY

Bahama Mama (Alcoholic)
 Espresso Chiller (Non Alcoholic)

IMPORTANT NUMBERS

Fire/Security: 7-3001
 Medical Emergency: 7-3000
 Health Center: 7-1923

ADULT ACTIVITY HIGHLIGHTS



SENSES SPA FITNESS CLASSES & SEMINARS

Body Sculpt Boot Camp - Senses Spa Fitness Center - 8:00 a.m.
Wake Up & Stretch - Senses Spa Fitness Center - 9:00 a.m.
Group Cycling - Senses Spa Fitness Center - 11:15 a.m.
How to Increase Your Metabolism - Senses Spa & Salon - 2:00 p.m.
Good Feet Seminar: Relieving Back Pain - Senses Spa & Salon - 3:30 p.m.
Yoga - Senses Spa Fitness Center - 4:30 p.m.

TASTING CLASSES

Stem to Stern Wine Tasting (21+) - Keys - 12:30 p.m.
Mixology (21+) - Keys - 2:30 p.m.
Cognac Tasting (21+) - Cove Cafe - 10:30 p.m.
 Please make reservations for tastings at Guest Services for a nominal fee.
 Tasting Seminars are only for Guests 21 and Older.

CLUB 18*21 - DIVE INTO DJ'ING
Fathoms, Deck 3, Forward - 5:15 p.m.
 Join our Club DJ as he teaches you all the tricks to becoming a great DJ.

CLUB 18*21 - CHILLAX
O'Gills Pub, Deck 3, Forward - 10:00 p.m.
 Time to Chillax at Club 18*21! Join your fellow Club cruisers and enjoy great music, a smoothie bar and some fun interactive games.

ART OF THE THEME SHOW TOUR

Palo, Deck 10, Aft - 3:30 p.m.
 Join us on a guided ship tour and discover the key ingredients that make the Disney Magic one-of-a-kind.

70'S MUSIC TRIVIA

O'Gills Pub, Deck 3, Forward - 7:30 p.m.
 Let's step back in time and visit Studio 54 as we test your 70's music knowledge.

CLUB DJ 4FRONT

Fathoms, Deck 3, Forward - 11:00 p.m.
 Join Club DJ 4FRONT as he spins the tunes LIVE!

FUN FOR ALL AGES HIGHLIGHTS

WAKE UP WITH DISNEY JUNIOR

D Lounge, Deck 4, Midship - 8:30 a.m.

What happens when you experience unlimited fun with your favorite Disney Junior shows? You get an exciting dance party designed especially for preschoolers ages seven and under.



MICKEY'S PUZZLE PLAYTIME

Disney's Oceaneer Club, Deck 5, Midship - 9:15 a.m.

Come and Play with Mickey & friends as they share their favorite games, puzzles and dances!

DISNEY CHANNEL ON DECK

Deck Stage, Deck 9, Midship - 3:00 p.m.

Don't change that channel! It's time for a Disney Channel afternoon poolside! Your cruise staff will host an exciting day of games and contests in between your favorite Disney Channel shows! So sit back, relax, and enjoy the sun!



CHIP-IT GOLF (12+)

Lobby Atrium, Deck 3, Midship - 3:30 p.m.

It's par for the course for our Guests 12 and older to compete on our special "greens" in this fun tournament.



\$5,000 MEGA JACKPOT BINGO

Fathoms, Deck 3, Forward - 4:15 p.m. (Pre Sales at 4:00 p.m.)
 Don't miss your chance to take home big money! 4 CASH prize games and great raffle prizes to be won! Complete the fourth game in 46 numbers or less and win the \$5,000 Mega Jackpot!



WHO WANTS TO BE A MOUSEKETEER?

D Lounge, Deck 4, Midship - 7:30 p.m. & 9:45 p.m.
 Your chance to get in to the "hot seat" and win limited edition prizes. Or, play along as part of our live studio audience.



SENSES SPA BINGO

Fathoms, Deck 3, Forward - 7:30 p.m. (Pre Sales at 7:15 p.m.)

Four CASH prizes to be won! Plus great spa prizes that will pamper you, including a mini facial and massages all courtesy of the Senses Spa and Salon. Serenity now!



FAMILY SUPERSTAR KARAOKE

D Lounge, Deck 4, Midship - 11:00 p.m.

Join your Cruise Staff in D Lounge tonight and sing along to your favorite song - fun for everyone.



YOUTH ACTIVITIES HIGHLIGHTS

DINE & PLAY

As a convenience for families dining at 8:15 p.m., our Youth Activities Counselors will be available at 9:15 p.m. at the entrance of Lumiere's and Carioca's and 9:30 p.m. at Animator's Palate to bring registered children to join the fun in Disney's Oceaneer Club and Disney's Oceaneer Lab.



Deck 5, Midship (7-1440)
(3-12 years old) 9:00 a.m. - 12:00 mid

STORY TIME WITH BELLE

3:00 p.m.

Come and listen to one of your favorite Disney stories.

PLUTO'S PAJAMA PARTY

7:30 p.m.

Bring the little ones in their pajamas but there will be anything but sleep when Pluto and friends host the ultimate slumber party!



Deck 5, Midship (7-1445)
(3-12 years old) 9:00 a.m. - 12:00 mid

SUPER SLOPPY SCIENCE

11:30 a.m. & 10:30 p.m.

Join Professor Make-O-Mess in some of the most extreme experiments you will ever see in the world of Super Sloppy Science!

ANYONE CAN COOK

3:45 p.m.

Anyone can cook as we work together to create some of our favorite treats.



Deck 2, Midship (7-5816)
(11-14 years old)

10:00 a.m. - 1:00 a.m.

SCAVENGER HUNT

3:00 p.m.

A little friendly competition exploring the ship; see if you can solve the clues and finish first.

THAT'S HILARIOUS

7:30 p.m.

Ever wanted to show off your comedy skills? Then be a part of the cast for the crazy improv show "That's Hilarious" and put on a live show for your friends.



Deck 10, Midship (7-18517)
(14-17 years old)

12:00 p.m. - 2:00 a.m.

SHIP FACTOR

4:00 p.m.

Ready for one of the toughest challenge competitions onboard?

ESPN DREAM TEAM DRAFT DAY

6:00 p.m.

Join us and engage in this interactive fantasy sports draft unlike anything you've ever seen! Can YOU draft the greatest sports team of All-Time?

YOUTH ACTIVITIES OPEN HOUSE

Open House is an opportunity for all to come and participate in a variety of exciting activities and free time in Disney's Oceaneer Club, Disney's Oceaneer Lab, Edge, Vibe, and It's a Small World Nursery throughout the cruise. During these times secured programming will still be offered in the other venues for those looking to check their children into care.

Vibe: 12:00 p.m. - 1:30 p.m.

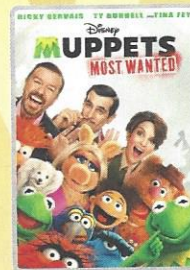
Disney's Oceaneer Lab: 3:00 p.m. - 5:00 p.m.

Edge: 10:00 a.m. - 12:00 p.m.

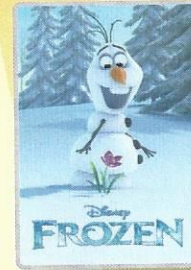
Disney's Oceaneer Club: 9:00 a.m. - 11:30 a.m.

BUENA VISTA THEATRE

Deck 5, Aft
Today's Movies

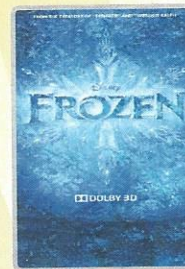


8:30 a.m., 1:00 p.m.,
5:45 p.m. & 8:15 p.m.
Duration: 1 hr 52 mins
Rating: PG

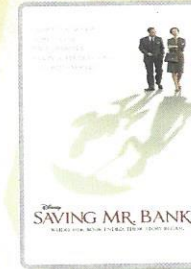


10:45 a.m.
Duration: 1 hr 48 mins
Rating: PG

DOLBY 3D



3:30 p.m.
Duration: 1 hr 48 mins
Rating: PG



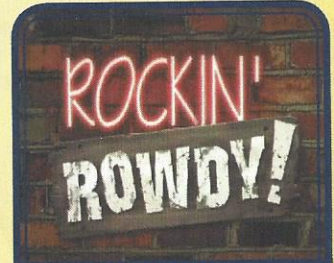
10:30 p.m.
Duration: 2 hrs 5 mins
Rating: PG-13



FAMILY DANCE PARTY

"The party don't start, till you walk in." Club New Year's Eve, you won't want to miss this journey of musical genres in history and performances by some of your favorite Cruise Staff. Bring your family and help us count down to a brand new year!

D Lounge,
Deck 4, Midship,
10:30 p.m.



THEME NIGHT

Join your Club Host as we round up the greatest classic rock and urban country hits. Featuring a bootstomping performance from the Boot Scootin' dancers to start the party!

Fathoms (18+),
Deck 3, Forward,
10:30 p.m.

MORE TO ENJOY WHILE ONBOARD



DISNEY VACATION CLUB® GROUP PREVIEW

Want to learn more about taking magical vacations year after year? Please see a Disney Vacation Club representative on Deck 4, Midship, or call 7-2805 from your stateroom phone for more information about our interactive group presentation.



PLAN YOUR NEXT GETAWAY NOW

Our 3 and 4 night Bahamian Cruises are a perfect way to get an instant tropical recharge! Departing from Miami or Port Canaveral, most Bahamian cruises include a stop at Disney's private island, Castaway Cay. Visit the Future Cruise Sales Desk today and ask about our special onboard booking offer.



PORT & SHOPPING INFORMATION

Nassau is one of the largest tax and duty free shopping locations! Don't miss the incredible shopping in Nassau today and take advantage of the savings! Meet Alyssa at Diamonds International #1A on your shopping map between 10:00 a.m. - 12:00 p.m. and enter to win a beautiful Diamond Heart Pendant! Make sure to pick up your shopping maps & coupons on the gangway.

Connect @ Sea

We are now offering a NEW and improved Internet service to stay connected on your cruise like no other in the industry! Internet packages range from \$0.25 per MB - \$89.00 (1000 MB package). For more information contact your Connect@Sea Expert or Guest Services onboard.

ONBOARD AIRLINE CHECK IN

This will be your final chance to enroll for Onboard Airline Check In. Stop by the Guest Services Desk, Deck 3, Midship by 8:00 p.m. tonight.

QUARTER MASTERS ARCADE

Where can you fly a fighter jet, save a Princess, race NASCAR's greatest and beat bad guys all before dinner? Quarter Masters is on Deck 9, Midship, where the champions play.



We have arrived at the Bahamian paradise of Nassau! There are many exciting adventures to choose from in Nassau and Disney's private island, Castaway Cay! Why not swim with Dolphins or visit Atlantis Resort and their very own water park? Why not explore the beautiful undersea life with one of our many splashtacular adventures! Stop by the **Port Adventures Desk, Deck 3, Midship**, and our team will be happy to assist!



Deck 9, Forward - Phone : 7-1465

KERATIN COMPLEX HAIR SMOOTHING TREATMENT

Formaldehyde Free, lasts 6 weeks, reduces frizziness by 95%
Increases your shine, hair health and boosts hair color.

Short/Medium Hair - \$149

Long Hair - \$175

SOPHIA FIORI DIAMOND TRUNK SHOW

Dazzling Diamonds,
Tantalizing Tanzanite and
many other Jewels.

WHITECAPS

Deck 4, Forward

Sophia Fiori



Shutters

GET THE PICTURE!

Visit Shutters today and ask your friendly Shutters staff about the "GET THE PICTURE!" Unlimited Digital Package which includes all your stateroom photos on one photo disc. For best value, upgrade to include all printed photos, too! Visit Shutters on Deck 4, Aft for more information.

Terms and conditions apply.

SHOPPING

SOPHIA FIORI DIAMOND TRUNK SHOW

Sophia Fiori is the world's leader in vivid colored diamonds and jeweler to the stars. The Sophia Fiori team has brought with them over \$1 million in diamonds at all price points from \$500 up to extravagant connoisseur pieces. White Caps, Deck 4, Forward.

HELPFUL SHOPPING TIP

Don't have time to drop off your souvenirs at your stateroom before dinner or a show? For your convenience, Disney Cruise Line merchandise locations can hold your purchased items for up to 24 hours while you enjoy the other Disney Cruise Line experiences you don't want to miss out on. Mickey's Mainsail and White Caps, Deck 4, Forward.

MAUI JIM SUNGLASSES

"A beautiful view of the world." Sunglasses of the future- ground breaking technology. Maui Jim polarized plus two lens technology provides unmatched protection and comfort. White Caps, Deck 4, Midship.

STYLISH WATCHES ONBOARD

Whether you need a tool for strict timekeeping or a fun fashion accessory, visit White Caps and browse the wide selection of stylish watches available including popular brands such as Ernst Benz and Shinola. Deck 4, Forward.

ERNST BENZ WATCHES

Manufactured in Switzerland and made in the time honored tradition of aviation timekeepers and the fine art of watch making, these large formats, self-winding instruments are renowned for their accuracy, durability and legibility. Stop by White Caps to see our full collection today! Deck 4, Forward.

ART GALLERY

Stop by the Art Gallery today to view our selection of Thomas Kinkade Limited Edition Disney paintings. While there, see if you can find some hidden characters in the artwork. Deck 4, Midship.

Due to port regulations, when the ship is docked, the stores will remain closed.

IMPORTANT INFORMATION

Security Notice

All Guests (including Children) who wish to disembark or embark the ship are required to present their Key to the World card at the gangway. A photo ID is also required for those Guests who are 18 years of age or older. Guests under the age of 18 are required to have a parent, guardian or other responsible adult sign an authorization form at the Guest Service Desk if they wish to go ashore unaccompanied or with any adult from another stateroom.

Sunscreens/Insect Repellent Advisory

Use sunscreen first and protect against mosquito borne illnesses by applying insect repellent on top of sunscreen when going ashore.

Cold and Flu Reminder

Please wash hands frequently and thoroughly, particularly before meals. Contact the Health Center by dialing 7-1923, should anyone in your party become ill.

Inclement Weather

For the safety of all Guests, outdoor events may be changed due to unforeseen weather conditions.

Corridor Quiet Hours

As a courtesy to all our Guests, please recognize quiet hallway hours from 10:00 p.m. til 8:00 a.m.

Environmental Message

With Disney's commitment to the Environment please refrain from throwing anything over the Ship's side. Thank you.

No Reserved Seats Policy

As a courtesy to all Guests we kindly advise that the saving of seats is not permitted in the Walt Disney Theatre, and the saving of the sun loungers is not permitted on Deck 9 and 10. Items left unattended will be returned to lost and found at Guest Services, Deck 3, Midship.

Smoking

For the comfort of our guests, the following areas are designated as smoking areas:
• Deck 10 Forward, Starboard Side
• Deck 9, Forward, Starboard Side at Quiet Cove
• Deck 4, Starboard Side from 6:00 p.m. to 6:00 a.m. only (all of Deck 4 is non-smoking from 6:00 a.m. to 6:00 p.m.)
Smoking is prohibited inside all guest staterooms and on stateroom verandahs. Guests found smoking in their staterooms or on their verandahs will be charged a \$250 stateroom recovery fee.

Walt Disney Theatre

Theatrical performances may use artificial fog, strobe lights, pyrotechnics and other special effects. For the safety of our performers and the comfort of those around you, the use of any photography or video recording device or any electronic equipment is prohibited.

Verandah Safety

Please do not leave any combustible materials on your balcony when not present in your stateroom for safety reasons.

Morning	8:30	8:45	9:00	9:15	9:30	9:45	10:00	10:15	10:30	10:45	11:00	11:15	11:30	11:45	12:00	12:15	12:30	12:45	1:00	1:15	1:30			
FUNNEL VISION	Mulan (G) Funnel Vision						Monsters, Inc. (G) Funnel Vision						Movie Challenge Poolside Funnel Vision			Movie - As Chosen By You Funnel Vision								
BUENA VISTA THEATRE	Muppets Most Wanted (PG) Duration: 1 Hour 52 Minutes												Frozen (PG) Duration: 1 Hour 48 Minutes						Muppets Most Wanted (PG) Duration: 1 Hour 52 Minutes					
CHARACTERS	Peter Pan Dk 4, Mid			Jake Dk 4, Mid			Cpt. Hook Dk 4, Mid			Jake Dk 4, Mid			Princess Gathering will be repeated on Thursday at 9:00 a.m.			Daisy Gazebo, Dk 9			Mickey & Pluto Gazebo, Dk 9					

FUN FOR ALL AGES	Disney Junior D Lounge		Mickey's Puzzle Playtime Disney's Oceaneer Club		Become Iron Man! Disney's Oceaneer Club		Ping Pong Tournament Wide World of Sports		Movie Challenge Poolside Deck Stage		Crafts: 3D Crafts Promenade Lounge							
ADULTS	Friends of Bill W. Animator's Palate		Wake Up & Stretch Senses Fitness Center				Group Cycling Senses Fitness Center				Stem to Stem Wine Tasting (21+) Keys							
VIBE 14-17 YEARS OLD													Youth Activities Open House					
EDGE 11-14 YEARS OLD	Youth Activities Open House						Craft Corner											
OCEANEER LAB 3-12 YEARS OLD	Animation Antics			Game Challenge			Super Sloppy Science			Lunch								
OCEANEER CLUB 3-12 YEARS OLD	Youth Activities Open House			Mickey's Puzzle Playtime			Become Iron Man!			Aloha Luau			Lunch					

Afternoon	1:45	2:00	2:15	2:30	2:45	3:00	3:15	3:30	3:45	4:00	4:15	4:30	4:45	5:00	5:15	5:30	5:45	6:00	6:15	6:30	6:45
FUNNEL VISION	Disney Channel on Deck Funnel Vision						Beauty & the Beast (G) Funnel Vision						A Bug's Life (G) Funnel Vision								
BUENA VISTA THEATRE	Frozen (PG) DOLBY.3D Duration: 1 Hour 48 Minutes												Muppets Most Wanted (PG) Duration: 1 Hour 52 Minutes								
CHARACTERS	Chip & Dale Gazebo, Dk 9		Goofy Gazebo, Dk 9		Cinderella Dk 4, Mid		Rapunzel Dk 4, Mid		Minnie Preludes		Mickey Preludes										
FUN FOR ALL AGES	Pictionary Challenge Promenade Lounge		Crafts: Buttons Promenade Lounge		Animation - Goofy Promenade Lounge		Toddler Time Promenade Lounge		Live Music with Infusion Duo Promenade Lounge		TWICE CHARMED Walt Disney Theatre										
ADULTS	Mixology (21+) Keys		Art of The Theme Show Tour Palo		Disney Vacation Club Group Preview D Lounge		Pub Quiz O Gills Pub														
VIBE 14-17 YEARS OLD	How to Increase Your Metabolism Senses Spa & Salon		Live Guitar Quiet Cove Pool		Group Cycling Senses Spa Fitness Center		Singles' Mingle Cove Cafe		Club 18*21 - Dive into DJ'ing Fathoms												
EDGE 11-14 YEARS OLD	Animation Cells		Teen Choice		Ship Factor		Scavenger Hunt		ESPN Dream Team Draft Day Dodgeball												
OCEANEER LAB 3-12 YEARS OLD	Trivia Challenge		Scavenger Hunt		Gender Wars		Dodgeball		Youth Activities Open House												
OCEANEER CLUB 3-12 YEARS OLD	Hats Off to Peter Pan		Youth Activities Open House		Anyone Can Cook		Dinner														
OCEANEER CLUB 3-12 YEARS OLD	Become Iron Man!		Story Time with Belle		Once Upon a Time		Dinner														

Evening	7:00	7:15	7:30	7:45	8:00	8:15	8:30	8:45	9:00	9:15	9:30	9:45	10:00	10:15	10:30	10:45	11:00	11:15	11:30	11:45	12:00
FUNNEL VISION	Ratatouille (G) Funnel Vision						The Mighty Ducks (PG) Funnel Vision														
BUENA VISTA THEATRE	Muppets Most Wanted (PG) Duration: 1 Hour 52 Minutes												Saving Mr. Banks (PG-13) Duration: 2 Hours 5 Minutes								
CHARACTERS	Minnie Dk 4, Mid		Mickey Mouse Dk 4, Mid		Tiana Preludes		Rapunzel Preludes		Cinderella Preludes		Minnie Dk 4, Mid		Mickey Dk 4, Mid								
FUN FOR ALL AGES	Bingo Pre Sales		Senses Spa Jackpot Fathoms		TWICE CHARMED Walt Disney Theatre		MOUSEKETEER D Lounge		Family Superstar Karaoke D Lounge		Live Music with Infusion Duo Promenade Lounge		Live Music with Infusion Duo Promenade Lounge								
ADULTS	70's Music Trivia O Gills Pub		Pub Quiz O Gills Pub		Live Music with Dreem Fathoms		ROCKIN' ROWDY! Fathoms		Club DJ 4FRONT Fathoms		Aileen de la Cruz LIVE Keys										
VIBE 14-17 YEARS OLD	Pop Divas with Aileen de la Cruz Keys		Aileen de la Cruz LIVE Keys		Club 18*21 - Chillax O Gills Pub		Aileen de la Cruz LIVE Keys														
EDGE 11-14 YEARS OLD	Dodgeball		Youth Activities Open House		AquaDunk Fun		Pump It Up		Smoothie Hour		Anyone Can Cook: Pizza		Gender Wars								
OCEANEER LAB 3-12 YEARS OLD	Open House		That's Hilarious		AquaDunk Fun		Boys and Girls Chill		Anyone Can Cook: Pizza		Pajamarama Movie Night										
OCEANEER CLUB 3-12 YEARS OLD	Magic Show		Who Wants To Be A Mouseketeer		Marshmallow Olympics		Youth Activities Open House		Super Sloppy Science												
OCEANEER CLUB 3-12 YEARS OLD	Pluto's Pajama Party		Heffalump Hunting		Camp Out		Become Iron Man!														

Symbol for activities that will be repeated during the cruise

FOLD

Fold along the dotted lines and take me with you so you don't miss any of the fun!

FOLD

IN THE SPOTLIGHT SERIES
SOAVE ITI SERIES

JUMP UP! SERIES
CREATE & INVENT SERIES
OPEN HOUSE

CLUBHOUSE SERIES
STORYBOOK SERIES

TUESDAY, APRIL 1, 2014 - NASSAU, BAHAMAS

BUENA VISTA THEATRE

Deck 5, Aft

DOLBY 3D



8:30 a.m., 1:00 p.m., 5:45 p.m. & 8:15 p.m.
Duration: 1 hr 52 mins
Rating: PG



10:45 a.m.
Duration: 1 hr 48 mins
Rating: PG



3:30 p.m.
Duration: 1 hr 48 mins
Rating: PG



10:30 p.m.
Duration: 2 hrs 5 mins
Rating: PG-13

Character Appearances

PETER PAN

Deck 4, Midship - 8:45 a.m.

JAKE - THE NEVERLAND PIRATE

Deck 4, Midship
9:15 a.m. & 10:15 a.m.

CAPTAIN HOOK

Deck 4, Midship - 9:45 a.m.

PRINCESS GATHERING

Lobby Atrium - 10:00 a.m.
(Princess Gathering will be repeated on Thursday at 9:00 a.m.)

DAISY DUCK

Gazebo, Deck 9 - 1:00 p.m.
Preludes - 8:00 p.m.

MICKEY & PLUTO

Gazebo, Deck 9 - 1:30 p.m.

CHIP & DALE

Gazebo, Deck 9 - 2:00 p.m.

GOOFY

Gazebo, Deck 9 - 2:30 p.m.

CINDERELLA

Deck 4, Midship - 4:45 p.m.
Preludes - 10:30 p.m.

(P) - Port Side, (S) - Starboard Side
Check here each day for Character appearances.
For detailed Character appearance information, please see the Character Information Board in the Lobby Atrium.
Meet-and-Greets will be advertised for the length of time the line will be open. To avoid disappointment, please meet at start time of appearances.



YOUTH ACTIVITIES THEMED EXPERIENCES

CLUBHOUSE SERIES
focuses on movement and features content which appeals to younger children.

STORYBOOK SERIES
is designed with a strong connection to the Disney classic stories.

JUMP UPI SERIES
includes large group games & movement-oriented activities.

CREATE & INVENT SERIES
will have a tactile focus allowing children to create and admire their work.

SPOTLIGHT SERIES
focuses on children's stage presence with lots of activities and enthusiasm.

SOLVE IT! SERIES
are less active, but will challenge children with problem/solutions-based activities.

YOUTH ACTIVITIES OPEN HOUSE

Activities for families, adults and children of all ages to enjoy together.

SHIP DIRECTORY

YOUTH ACTIVITIES

DISNEY'S OCEANEER CLUB	DECK 5, MID	9:00 AM - 12:00 MID
DISNEY'S OCEANEER LAB	DECK 5, MID	9:00 AM - 12:00 MID
EDGE	DECK 2, MID	10:00 AM - 1:00 AM
IT'S A SMALL WORLD NURSERY	DECK 5, AFT	9:00 AM - 11:30 PM
VIBE	DECK 10, MID	12:00 PM - 2:00 AM

POOLS

*Children under 12 years of age must have adult supervision in all pools.

AQUADUNK	DECK 10, MID	3:00 PM - 6:00 PM
AQUALAB	DECK 9, AFT	9:00 AM - 9:00 PM
GOOFY'S POOL	DECK 9, MID	9:00 AM - 6:00 PM
NEPHEW'S SPLASH ZONE	DECK 9, AFT	9:00 AM - 6:00 PM
QUIET COVE POOL (18+)	DECK 9, FWD	6:00 AM - 12:00 MID
TWIST 'N' SPOUT	DECK 9, AFT	10:00 AM - 9:00 PM

RECREATION

PORT ADVENTURES DESK	DECK 3, MID	8:30 AM - 11:00 AM
SENSSES FITNESS CENTER (18+)	DECK 9, FWD	7:00 PM - 8:30 PM
WIDE WORLD OF SPORTS DECK	DECK 10, FWD	8:00 AM - 10:00 PM

GENERAL INFORMATION

BUENA VISTA THEATRE	DECK 5, AFT	SHOWTIMES
DISNEY VACATION CLUB DESK	DECK 4, MID	9:00 AM - 11:00 AM
ONBOARD SALES DESK	DECK 4, MID	5:30 PM - 10:00 PM
FUNNEL VISION	DECK 9, MID	8:30 AM - 9:30 AM
GUEST SERVICES	DECK 3, MID	4:00 PM - 6:00 PM
HAIR BRAIDING	DECK 9, MID	7:30 PM - 8:30 PM
MEDICAL HEALTH CENTER	DECK 1, FWD	SHOWTIMES
PORT & SHOPPING DESK	DECK 3, MID	24 HOURS
PRELUDES	DECK 4, FWD	2:00 PM - 8:30 PM
QUARTER MASTERS (ARCADE)	DECK 9, MID	9:30 AM - 11:00 AM
SENSSES SPA AND SALON	DECK 9, FWD	4:30 PM - 7:00 PM
SHUTTERS PHOTO GALLERY	DECK 4, AFT	5:30 PM - 8:30 PM
WALT DISNEY THEATRE	DECK 4, FWD	9:00 PM - 10:00 PM

SHOPPING

MICKEY'S MANSAIL	DECK 4, FWD	6:30 PM - 11:00 PM
QUARCKS	DECK 9, MID	
SEA TREASURES	DECK 3, FWD	7:00 PM - 11:00 PM
VISTA GALLERY	DECK 4, MID	7:00 PM - 11:00 PM
WHITE CAPS	DECK 4, FWD	6:30 PM - 11:00 PM

IMPORTANT NUMBERS

Fine/Security: 7-3001
Medical EMERGENCY: 7-3000
Health Center: 7-1923

DINNER MENUS OF THE DAY
Bahama Mama (Alcoholic)
Carrioca's South American Dinner
Lumiere's: French Dinner
Dining Times: 5:45pm & 8:15pm

WEATHER FORECAST
Today: Partly Sunny High: 72 F/22 C
Tomorrow: Partly Sunny High: 72 F/22 C

Evening Attire: Optional Dress Up

DINING & LOUNGES

BRUNCH

CABANAS	DECK 9, AFT	7:30 AM - 11:30 AM
DAISY'S DE LITES	DECK 9, AFT	7:00 AM - 9:30 AM
LUMIERE'S (A-LA CARTE)	DECK 3, MID	8:00 AM - 9:30 AM

LUNCH

CABANAS	DECK 9, AFT	11:30 AM - 3:00 PM
DAISY'S DE-LITES	DECK 9, AFT	11:00 AM - 6:00 PM
LUMIERE'S	DECK 3, MID	12:00 PM - 1:30 PM
PETE'S BOILER BITES	DECK 9, AFT	11:00 AM - 6:00 PM
PINOCCHIO'S PIZZERIA	DECK 9, MID	11:00 AM - 6:00 PM

DINNER

ANIMATOR'S PALATE	DECK 4, AFT	5:45 PM & 8:15 PM
CABANAS TABLE SERVICE	DECK 9, AFT	6:30 PM - 8:30 PM
CARIOCOA'S	DECK 3, AFT	5:45 PM & 8:15 PM
LUMIERE'S	DECK 3, MID	5:45 PM & 8:15 PM
PALO (FOR RESERVATIONS CALL 7-8849)	DECK 10, AFT	6:00 PM - 8:30 PM
PETE'S BOILER BITES	DECK 9, AFT	6:00 PM - 10:00 PM

LATE NIGHT SNACKS

O'GILLS PUB	DECK 3, FWD	10:45 PM - 11:15 PM
PINOCCHIO'S PIZZERIA	DECK 9, MID	9:30 PM - 12:00 MID
PROMENADE LOUNGE	DECK 3, AFT	10:45 PM - 11:15 PM

ADDED FEATURES

EYE SCREAM	DECK 9, AFT	11:00 AM - 11:00 PM
BEVERAGE STATION	DECK 9, AFT	24 HOURS
ROOM SERVICE	DIAL 7-4330	24 HOURS

ENTERTAINMENT - LOUNGES - 8849

Adults must be 21 and older to consume alcoholic beverages.

AFTER HOURS	DECK 3, FWD	(AFTER 9:00 PM, ADULTS ONLY)
COVE CAFE (18+)	DECK 9, MID	7:00 AM - 12:00 MID
D LOUNGE	DECK 4, MID	SHOWTIMES
FATHOMS (18+)	DECK 3, FWD	7:00 PM - 2:00 AM
FROZONE TREATS	DECK 9, AFT	11:00 AM - 8:00 PM
INTERNET CAFE	DECK 3, AFT	24 HOURS
KEYS (18+)	DECK 3, FWD	5:30 PM - 12:30 AM
O'GILLS PUB (18+)	DECK 3, FWD	3:00 PM - 12:30 AM
PRELUDES	DECK 4, FWD	5:30 PM - 9:00 PM
PROMENADE LOUNGE	DECK 3, AFT	9:00 AM - 12:00 MID
PINOCCHIO'S PIZZERIA	DECK 9, MID	9:30 AM - 12:00 MID
SIGNALS (18+)	DECK 9, FWD	10:00 AM - 10:30 PM

Public Health Advisory: Consuming raw or undercooked meats, poultry, seafood, shellfish, or eggs may increase your risk for foodborne illness, especially if you have certain medical condition.

All Ashore: Approx. 9:30 a.m.

All Aboard: Approx. 5:45 p.m.

SHIP'S AGENT IN NASSAU

R.H. CURRY & CO., LTD.

Ph: 242.323.8425