

# PERSONAL NAVIGATOR

Sunrise: 7:05 a.m. Sunset: 7:34 p.m.  
Evening Attire: Cruise Casual

Today: Partly Sunny High: 74°F/23°C  
Tomorrow: Partly Sunny High: 76°F/24°C

THURSDAY, APRIL 3, 2014

DAY AT SEA



AN ENCHANTED CLASSIC

*In this spectacular fantasy, a little girl discovers the power of her dreams. Fly through the air with Peter Pan and your imagination, as many Classic Disney Characters spring to life. With a little Faith, Trust and Pixie Dust you'll see that your dreams can come true!*


WALT DISNEY THEATRE

Deck 4, Forward

6:15 p.m. & 8:30 p.m.



As a courtesy to all Guests, we kindly advise that the saving of seats is **not** permitted in the Walt Disney Theatre.

 Assistance available at the entrance to the Walt Disney Theatre 30 minutes prior to show time.

## Disney MAGIC Fun Facts

Tonnage: 84,000

Length Overall: 984 Feet

Ship's Registry: *The Bahamas*

### Important Dates

Keel Laid: *October 31, 1996*

Launch Date: *April 12, 1997*

Inaugural Cruise: *July 30, 1998*

• The Magic was built by a process called Jumboisation (in 2 separate sections) in Italy at the Fincantieri Maghera Shipyard (stern) and the Fincantieri Ancona Shipyard (bow). The joint of the ship is just in front of Lumiere's.

• The anchor of the Disney Magic weighs 28,200 lbs (12,802.8kg) - the same weight as three elephants.

• Over 50 nationalities make up the 960 Crew Members on board.

• Sorcerer Mickey stands proudly 10 ft tall on the bow of the ship. There are other characters in the artwork around him.

• Goofy hangs 20 ft tall, painting the finishing touches on the stern.



### FAREWELL SHOW

The world-famous Disney Characters and some of your new friends from the Disney Magic stage shows bid you a charming farewell.

Lobby Atrium,  
Deck 3, Midship,  
10:00 p.m.

### Don't Miss:

#### Magic Workshop (6+)

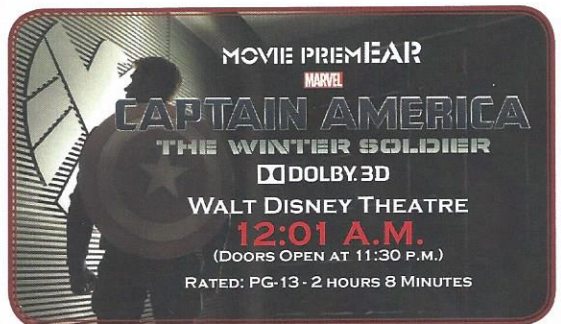
*Fathoms, Deck 3, Forward - 7:30 p.m.*

Scott Pepper teaches you the basics of magic in this fun family event.

#### 80's Flashback (18+)

*Fathoms, Deck 3, Forward - 11:00 p.m.*

The 80's are back! Join your Cruise Staff team, in testing your 80's knowledge in this high energy 80's revival.



### Debark Talk Broadcast

Important information regarding disembarkation procedures for Port Canaveral and your journey home will be covered in this debarkation briefing. The broadcast will be shown continuously on channel 24-2 of your stateroom television for your convenience.

Thank you in advance for completing your comment card.

## DINNER MENU

Animator's Palate: Show Dinner  
Carioca's: South American Dinner  
Lumière's: French Dinner

## DRINK OF THE DAY

High Tide (Alcoholic)  
Purple Basil Lemonade (Non Alcoholic)

### IMPORTANT NUMBERS

Fire/Security: 7-3001  
Medical Emergency: 7-3000  
Health Center: 7-1923



# ADULT ACTIVITY HIGHLIGHTS



## SENSES SPA FITNESS CLASSES & SEMINARS

*Body Sculpt Boot Camp* - Senses Spa Fitness Center - 8:00 a.m.  
*Wake Up & Stretch Class* - Senses Spa & Salon - 9:00 a.m.  
*Group Cycling* - Senses Spa & Salon - 10:00 a.m.  
*Secrets to a Flatter Stomach* - Senses Spa & Salon - 12:00 p.m.  
*Detox for Health & Weight Loss* - Senses Spa & Salon - 1:30 p.m.  
*Yoga* - Senses Spa & Salon - 4:30 p.m.

## TASTING CLASSES

*Chocolate Tasting* (21+) - Keys - 12:00 p.m.  
*Tequila & Margarita Tasting* (21+) - Keys - 1:30 p.m.  
*Beer Tasting* (21+) - Keys - 3:00 p.m.  
 Please make reservations for tastings at Guest Services for a nominal fee.  
 Tasting Seminars are only for Guests 21 and Older.

CLUB  
18\*21

**CLUB 18\*21 - BRUNCH**  
*Lumiere's, Deck 3, Midship - 11:30 a.m.*

**CLUB 18\*21 - GAME CHALLENGE**  
*O'Gills Pub, Deck 3, Forward - 5:15 p.m.*

**CLUB 18\*21 - FAREWELL**  
*O'Gills Pub, Deck 3, Forward - 10:00 p.m.*

## ART OF THE THEME SHOW TOUR

*Palo, Deck 10, Aft - 9:00 a.m. & 4:00 p.m.*  
 Join us on a guided ship tour and discover the key ingredients that make the Disney Magic one-of-a-kind.



**ESPN DREAM TEAM DRAFT DAY - BASKETBALL**  
*O'Gills Pub, Deck 3, Forward - 1:45 p.m.*  
 Join the "Commissioner" and engage in this interactive fantasy basketball draft unlike anything you've ever seen!  
 Can YOU draft the greatest basketball team of All-Time?



**ANYONE CAN COOK - APPLE STRUDEL**  
*D Lounge, Deck 4, Midship - 2:30 p.m.*  
 From our galley to yours. Join our chefs as they show you how to prepare delicious dishes. Today's Menu - Apple Strudel

## 80'S MUSIC TRIVIA

*O'Gills Pub, Deck 3, Forward - 7:30 p.m.*  
 Let's step back in time as we test your 80's music knowledge.

# FUN FOR ALL AGES HIGHLIGHTS

## WAKE UP WITH DISNEY JUNIOR

*D Lounge, Deck 4, Midship - 8:30 a.m.*  
 What happens when you experience unlimited fun with your favorite Disney Junior shows? You get an exciting dance party designed especially for preschoolers ages seven and under.



## \$10,000 MEGA JACKPOT BINGO

*Fathoms, Deck 3, Forward - 10:45 a.m. (Pre Sales at 10:30 a.m.)*  
 It's Big, it's Massive, it's Supersized! It's \$10,000 MEGA Jackpot Bingo! Take home \$10,000 if you can cover your card in 46 numbers or less. If not, we carry on to play for the biggest cash prize of the session, plus today's Disney Vacation Club sponsored raffle includes a \$100 Onboard Credit and prize-packs.



## JAM FEST AT SEA

*Deck Stage, Deck 9, Midship - 12:15 p.m.*  
 Are you ready for a jammin' good time? Imagine your favorite Disney Channel music and stars coming together to create the biggest Jam Fest at Sea! Great music, cool music videos and hot dance moves that are off the charts. Come out to be part of the action!



## MICKEY 200

*Fathoms, Deck 3, Forward - 12:45 p.m.*  
 Don't eat your vegetables... race them in this wild and wacky charge to the finish line. May the best veggie win! (Limited Availability)



## MAGIC QUEST

*Fathoms, Deck 3, Forward - 2:45 p.m.*  
 Enjoy the wildest and wackiest scavenger team event on the seven seas!

## TOWEL FOLDING

*Fathoms, Deck 3, Forward - 2:00 p.m.*  
 Learn to create those amazing towel creatures you've seen in your stateroom all cruise long.

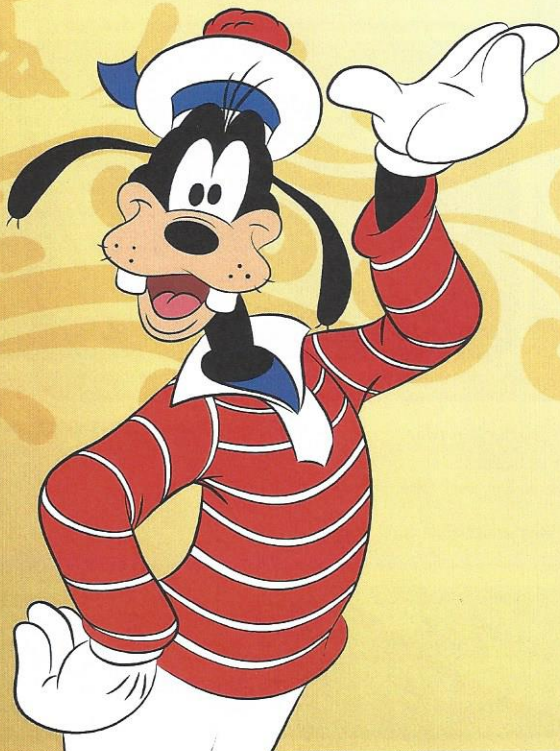
## FINAL JACKPOT BINGO

*Fathoms, Deck 3, Forward - 4:00 p.m. (Pre Sales at 3:30 p.m.)*  
 The snowball jackpot MUST BE WON at this final session! Beat the line and get your cards early. Who will be the lucky winner? It could be you!



## SO YOU THINK YOU KNOW YOUR FAMILY?

*D Lounge, Deck 4, Midship - 7:30 p.m.*  
 This fun-filled family game show is always full of surprises. Find out how well you know, or don't know your family!





# YOUTH ACTIVITIES HIGHLIGHTS

## DINE & PLAY

As a convenience for families dining at 8:15 p.m., our Youth Activities Counselors will be available at 9:15 p.m. at the entrance of Lumiere's and Carioca's and 9:30 p.m. at Animator's Palate to bring registered children to join the fun in Disney's Oceaneer Club and Disney's Oceaneer Lab.



**Deck 5, Aft (7-5864) 8:00 a.m. - 11:30 p.m.**  
 Infants and Toddlers can enjoy toys and activities at It's a Small World Nursery. Reservations are first come, first served so please stop by!



**Deck 5, Midship (7-1440) (3-12 years old) 9:00 a.m. - 12:00 mid**

### MARVEL AVENGERS ACADEMY

**7:15 p.m.**  
 Young Heroes Assemble! S.H.I.E.L.D and The Avengers need your help in defeating the evil Red Skull and his dreaded Cabal.

### TOY STORY BOOT CAMP

**9:30 p.m.**  
 Join Corporal Green in our own version of boot camp as we learn how to have fun - The Toy Story way!



**Deck 5, Midship (7-1445) (3-12 years old) 9:00 a.m. - 12:00 mid**

### PISTON CUP CHALLENGE

**2:30 p.m.**  
 It's Dinoco time and you're part of the pit crew! Design your own race car and see if you've got what it takes to end up in the Winner's Circle!

### FRIENDSHIP ROCKS

**5:00 p.m.**  
 Come and celebrate with all the children from the Oceaneer Club and Lab in the jammin' performance of Friendship Rocks! You won't want to miss any of the fun.



**Deck 2, Midship (7-5816) (11-14 years old) 10:00 a.m. - 12:00 mid**

### ANYONE CAN COOK

**7:30 p.m.**  
 Anyone can cook as we work together to create some of our favorite treats.

### HOW WELL DO YOU KNOW YOUR COUNSELOR?

**10:00 p.m.**  
 Do you think you know all there is to know about your counselors? Come test out your knowledge with all of your friends!



**Deck 10, Midship (7-18517) (14-17 years old) 10:00 a.m. - 1:00 a.m.**

### GOTCHA

**11:00 a.m.**  
 You will try to eliminate your victim by various methods collecting points throughout the day, last person standing with the most points wins.

### ZOMBIFIED PREMIERE

**10:00 p.m.**  
 One time only! Come join us for this exclusive big screen premiere of "Zombified," a film featuring the Teens of Vibe as the cast!

# BUENA VISTA THEATRE

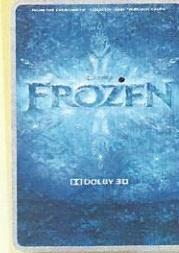
## Deck 5, Aft Today's Movies

**DOLBY 3D**

**DOLBY 3D**



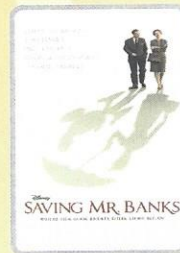
**8:30 a.m.**  
 Duration:  
 1 hr 52 mins  
 Rating: PG



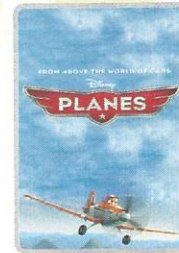
**10:45 a.m.**  
 Duration:  
 1 hr 48 mins  
 Rating: PG



**1:00 p.m.**  
 Duration:  
 2 hrs 10 mins  
 Rating: PG-13



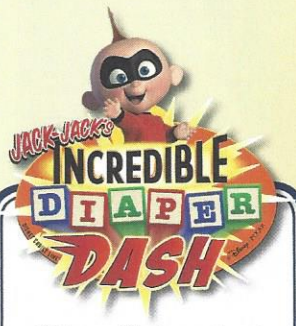
**3:30 p.m.**  
 Duration:  
 2 hrs 5 mins  
 Rating: PG-13



**6:00 p.m. & 8:15 p.m.**  
 Duration:  
 1 hr 32 mins  
 Rating: PG



**10:45 p.m.**  
 Duration:  
 1 hr 48 mins  
 Rating: PG



Calling all baby cruisers!  
 The Disney Magic's babies take to the mat to see who's the fastest crawler of the seven seas!

**Lobby Atrium,  
 Deck 3, Midship,  
 11:30 a.m.**



### VARIETY ACT

Featuring the Magic & Illusion of Scott Pepper.

**Magic Workshop,  
 Fathoms (6+), Deck 3, Forward,  
 7:30 p.m.**

**Adult Exclusive Show,  
 Fathoms (18+), Deck 3, Forward,  
 10:30 p.m.**

## YOUTH ACTIVITIES OPEN HOUSE

Open House is an opportunity for all to come and participate in a variety of exciting activities and free time in the Oceaneer Club, Oceaneer Lab, Edge, Vibe, and It's a Small World Nursery throughout the cruise. During these times secured programming will still be offered in the other venues for those looking to check their children into care.

Vibe: 10:00 a.m. - 11:00 a.m.  
 Edge: 10:00 a.m. - 11:00 a.m.

Disney's Oceaneer Lab: 2:00 p.m. - 4:00 p.m.  
 Disney's Oceaneer Club: 9:00 a.m. - 10:30 a.m.



# MORE TO ENJOY WHILE ONBOARD



## EASTERN, WESTERN OR SOUTHERN CARIBBEAN

Set your compass for the Caribbean in 2014! Disney Cruise Line offers a variety of 7-night sailings to exotic ports in the Eastern, Western or Southern Caribbean. Visit the Onboard Sales Desk to learn more about our special onboard booking offer.



## DISNEY VACATION CLUB® GROUP PREVIEW

Want to learn more about taking magical vacations year after year? Please see a Disney Vacation Club representative on Deck 4, Midship, or call 7-2805 from your stateroom phone for more information about our interactive group presentation.

## EXPRESS WALK OFF

This option allows you to take your luggage off the ship at your leisure once the ship has been cleared by the local authorities. You won't need to wait for your luggage to enter the terminal and there is no need to claim it inside the terminal building. Please note that no assistance with luggage is provided for this option.



## GO-SMILE

Your smile is the outward expression of your inner beauty. A beaming smile makes you look younger, more radiant and confident. Are you ready to Smile? Then try our advanced Go-Smile teeth whitening treatment. It's a safe and effective way to take your smile from dull to dazzling in just 30 minutes.

\$149 per person \$258 for couples

Deck 9, Forward - Phone : 7-1465

## SOPHIA FIORI

Industry leaders in vivid colored diamonds, and more specifically Caribbean blue diamonds - one of the single most popular purchases at sea because it reminds everyone of the colors of the breathtaking ocean!

## WHITE CAPS

Deck 4, Forward

Sophia Fiori



# Shutters

## GET THE PICTURE!

Your professional cruise photos all inclusive packages\*  
Unlimited digital files or unlimited prints - \$229.95  
Unlimited digital files plus unlimited prints - \$279.95

\*Offer available per stateroom; terms and conditions apply

## EXPRESS CHECK OUT

If you have a credit card on file, you qualify for express check out. No need to visit Guest Services to settle your account.

## QUARTER MASTERS ARCADE

Where can you fly a fighter jet, save a Princess, race NASCAR's greatest and beat bad guys all before dinner? Quarter Masters is on Deck 9, Midship, where the champions play.

## Connect @ Sea

We are now offering a NEW and improved Internet service to stay connected on your cruise like no other in the industry! Internet packages range from \$0.25 per MB - \$89.00 (1000 MB package). For more information contact your Connect@Sea Expert or Guest Services onboard.

## SHOPPING

### OFFICER PIN TRADING

Make your way to Preludes at 7:15 p.m. and join the Officers of the Disney Magic® Cruise Ship for pin trading. Deck 4, Forward.

### SOPHIA FIORI GUESS THE CARAT WEIGHT & WIN!

Guess the Carat Weight of one of our exquisite Sophia Fiori diamond rings. Whoever guesses closest wins a 5-carat Midnight Sapphire! Winners draw at 7:30 pm. Must be present to win! White Caps, Deck 4, Forward. This offer is not affiliated with Disney Cruise Line.

### STYLISH WATCHES ONBOARD

Whether you need a tool for strict timekeeping or a fun fashion accessory, visit White Caps and browse the wide selection of stylish watches available including popular brands such as Ernst Benz and Shinola. Deck 4, Forward.

### GREAT OFFERS WHEN YOU SHOP ONBOARD

Stop by White Caps, Deck 4 Forward, and receive a Disney Cruise Line® Pillow for \$16.95 with any merchandise purchase of \$30.00 or more and/or a Disney Cruise Line® Throw for \$24.95 with any merchandise purchase of \$40.00 or more. While supplies last. Offer not valid on previous purchases. Offer subject to change without notice.

### CAPTAIN'S SIGNING

Don't miss your chance to meet the Master of the Disney Magic! Stop by White Caps today at 12:15 p.m. where you can have your cruise mementos signed by our Captain. Deck 4, Forward.

### SILENT ART AUCTION

Original inks, line art, lithographs or will it be prints? Make sure you stop by the art gallery to see which pieces are up for silent auction today! The silent auction will take place from 11:00 a.m. to 2:00 p.m. Art Gallery, Deck 4, Midship.

## IMPORTANT INFORMATION

### Security Notice

All Guests (including Children) who wish to disembark or embark the ship are required to present their Key to the World card at the gangway. A photo ID is also required for those Guests who are 18 years of age or older. Guests under the age of 18 are required to have a parent, guardian or other responsible adult sign an authorization form at the Guest Service Desk if they wish to go ashore unaccompanied or with any adult from another stateroom.

### Sunscreen/Insect Repellent Advisory

Use sunscreen first and protect against mosquito borne illnesses by applying insect repellent on top of sunscreen when going ashore.

### Cold and Flu Reminder

Please wash hands frequently and thoroughly, particularly before meals. Contact the Health Center by dialing 7-1923, should anyone in your party become ill.

### Inclement Weather

For the safety of all Guests, outdoor events may be changed due to unforeseen weather conditions.

### Corridor Quiet Hours

As a courtesy to all our Guests, please recognize quiet hallway hours from 10:00 p.m. til 8:00 a.m.

### Environmental Message

With Disney's commitment to the Environment please refrain from throwing anything over the Ship's side. Thank you.

### No Reserved Seats Policy

As a courtesy to all Guests we kindly advise that the saving of seats is not permitted in the Walt Disney Theatre, and the saving of the sun loungers is not permitted on Deck 9 and 10. Items left unattended will be returned to lost and found at Guest Services, Deck 3, Midship.

### Smoking

For the comfort of our guests, the following areas are designated as smoking areas:  
• Deck 10 Forward, Starboard Side  
• Deck 9, Forward, Starboard Side at Quiet Cove  
• Deck 4, Starboard Side from 6:00 p.m. to 6:00 a.m. only (all of Deck 4 is non-smoking from 6:00 a.m. to 6:00 p.m.)  
Smoking is prohibited inside all guest staterooms and on stateroom verandahs. Guests found smoking in their staterooms or on their verandahs will be charged a \$250 stateroom recovery fee.

### Walt Disney Theatre

Theatrical performances may use artificial fog, strobe lights, pyrotechnics and other special effects. For the safety of our performers and the comfort of those around you, the use of any photography or video recording device or any electronic equipment is prohibited.

### Verandah Safety

Please do not leave any combustible materials on your balcony when not present in your stateroom for safety reasons.